

AIN'T
NOTHING
LIKE THE
REAL
THING



HIRSCHL & ADLER



In the words of Motown R&B singers Marvin Gaye and Tammi Terrell, we know there “Ain’t Nothing Like the Real Thing,” but for the moment Hirschl & Adler is pleased to bring you the joy of beautiful objects at a distance. Our current exhibition, named after the 1968 hit song by Ashford & Simpson, features a wide variety of American paintings and Neo-Classical furniture along with a selection of modern and contemporary works.

Leaf through the pages of this e-catalogue to explore an exhibition curated to offer an irresistible selection of works at a gentle price point. As the song says, “I’m well aware nothing takes / The place of your being there,” but for now, “let’s stay together” online.

For more information on the works presented here,
please click on the links embedded in the images and text.

For inquiries, please contact:

Gallery@HirschlAndAdler.com

212.535.8810

Please note: The items in this catalogue are available for purchase. All works are offered subject to prior sale.



DAVID LIGARE (b. 1945)
Still Life with Lemons, 2019
Oil on canvas, 20 x 24 in.

\$26,000

[INQUIRE](#)

[ARTIST CV](#)



(previous page)

GEORGE LOVETT KINGSLAND MORRIS (1905–1975)

Untitled [Abstraction], late 1940s

Gouache on paper, 18 7/8 x 14 3/4 in.

\$45,000

[INQUIRE](#)

[COMMENTARY](#)

JOHN BENNETT (1840–1907)

Plaque with White Azaleas on a Cobalt Blue Ground,
about 1881–82

Earthenware, painted & glazed,
1 5/8 in. high x 14 13/16 in. diameter

\$35,000

[INQUIRE](#)

[COMMENTARY](#)





JOHN SLOAN (1871–1951)
Landscape, Santa Fe, about 1925
Oil on board, 16 x 20 1/4 in.
\$65,000

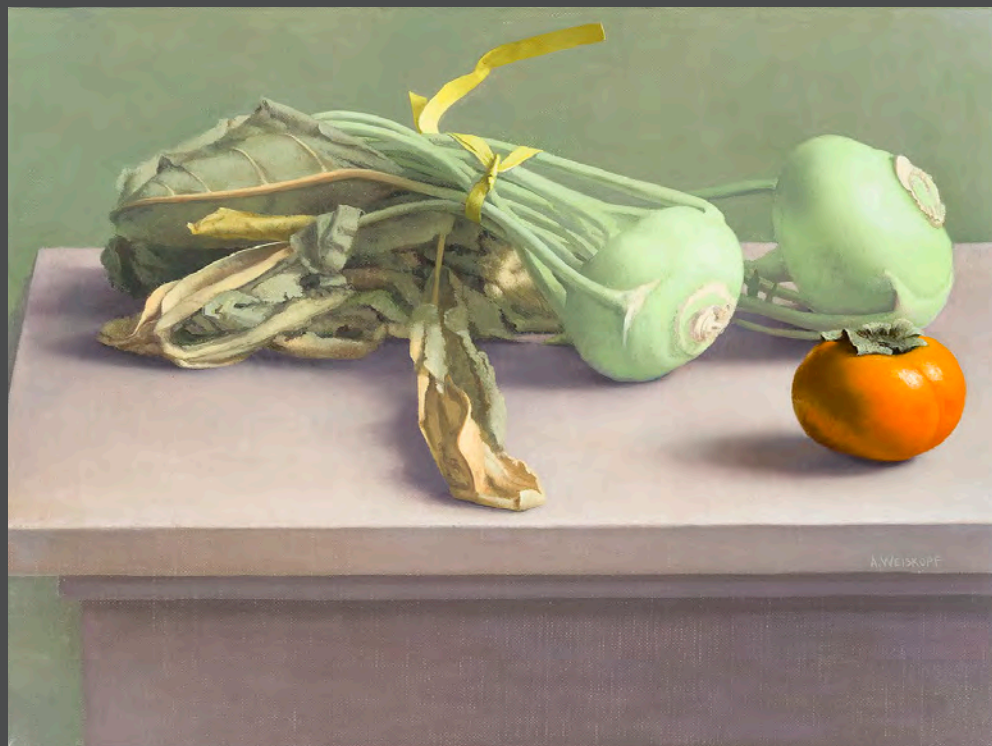
[INQUIRE](#)

[COMMENTARY](#)

AMY WEISKOPF (b. 1957)
*Still Life with Kohlrabi and
Persimmon*, 2014
Oil on linen, 12 x 16 in.
\$16,000

[INQUIRE](#)

[ARTIST CV](#)



LOUISA L. CHASE (1951–2016)
Untitled, about 1979
Oil on canvas, 14 x 12 in.
\$15,000

[INQUIRE](#)

[ARTIST CV](#)





ENGLISH

Regency Work Table with Chinoiserie Penwork Decoration,
about 1820

Japanned wood (birch, cypress, and mahogany),
with penwork decoration, and fabric-covered workbox
31 in. high, 20 3/4 in. wide, 15 in. deep

\$45,000

[INQUIRE](#)

[COMMENTARY](#)

(top)





STANLEY TWARDOWICZ (1917–2008)
No. 3 – 1960, 1960
Oil and enamel on canvas, 30 1/4 x 43 1/2 in.
\$35,000

[INQUIRE](#)

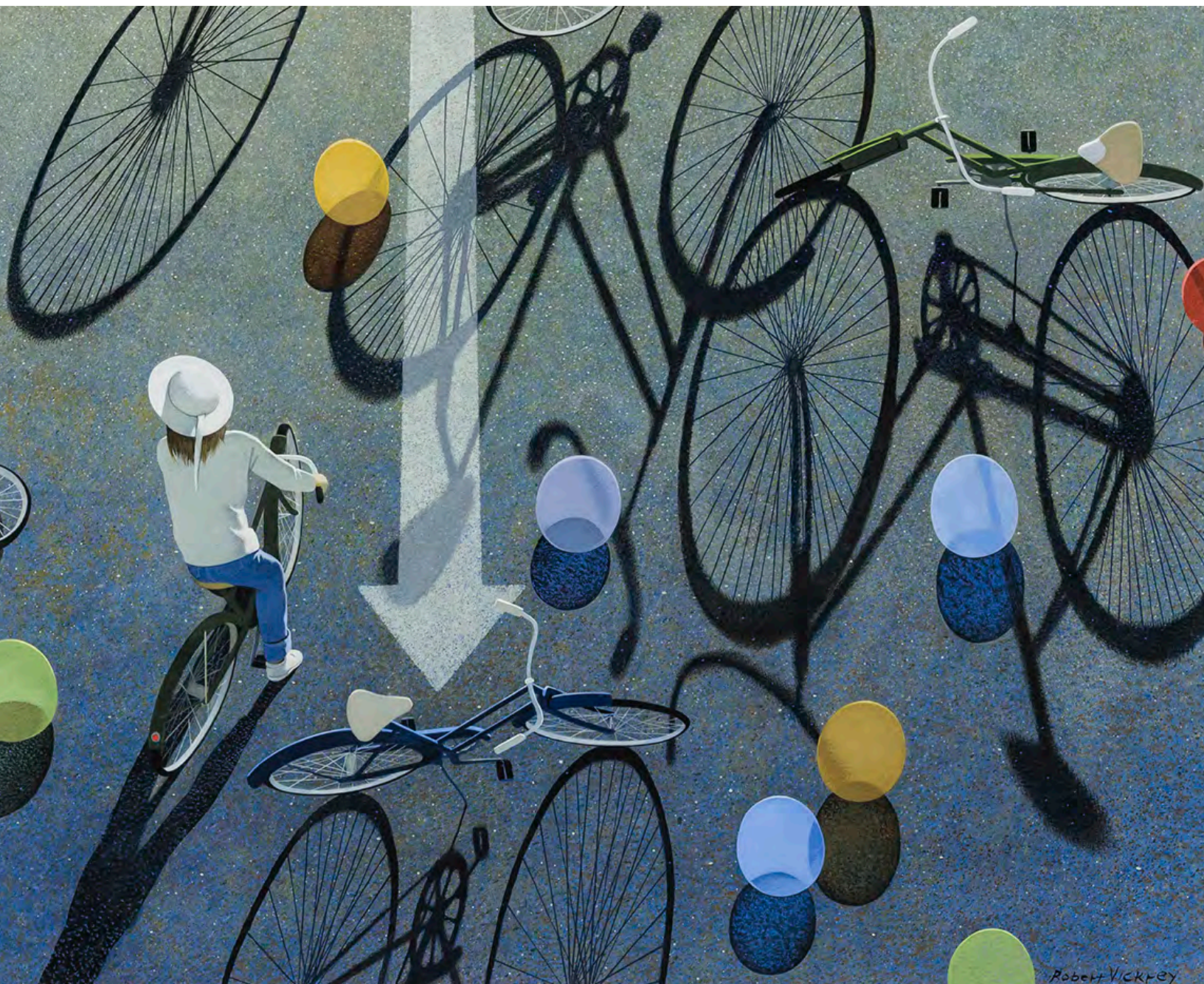
[ARTIST CV](#)



FRANK WALTER (1926–2009)
Aurora
Watercolor on paper, 3 13/16 x 2 7/8 in.
\$4,000

[INQUIRE](#)

[ARTIST CV](#)



ROBERT VICKREY (1926–2011)

Eight Balloons, 1995

Egg tempera on gessoed panel, 22 1/4 x 27 1/2 in.

\$40,000

[INQUIRE](#)

[COMMENTARY](#)



RALSTON CRAWFORD (1906–1978)

Fishing Boats #3, 1955

Oil on canvas, 18 x 15 in.

\$55,000

[INQUIRE](#)

[COMMENTARY](#)

JOSEF ALBERS (1888–1976)

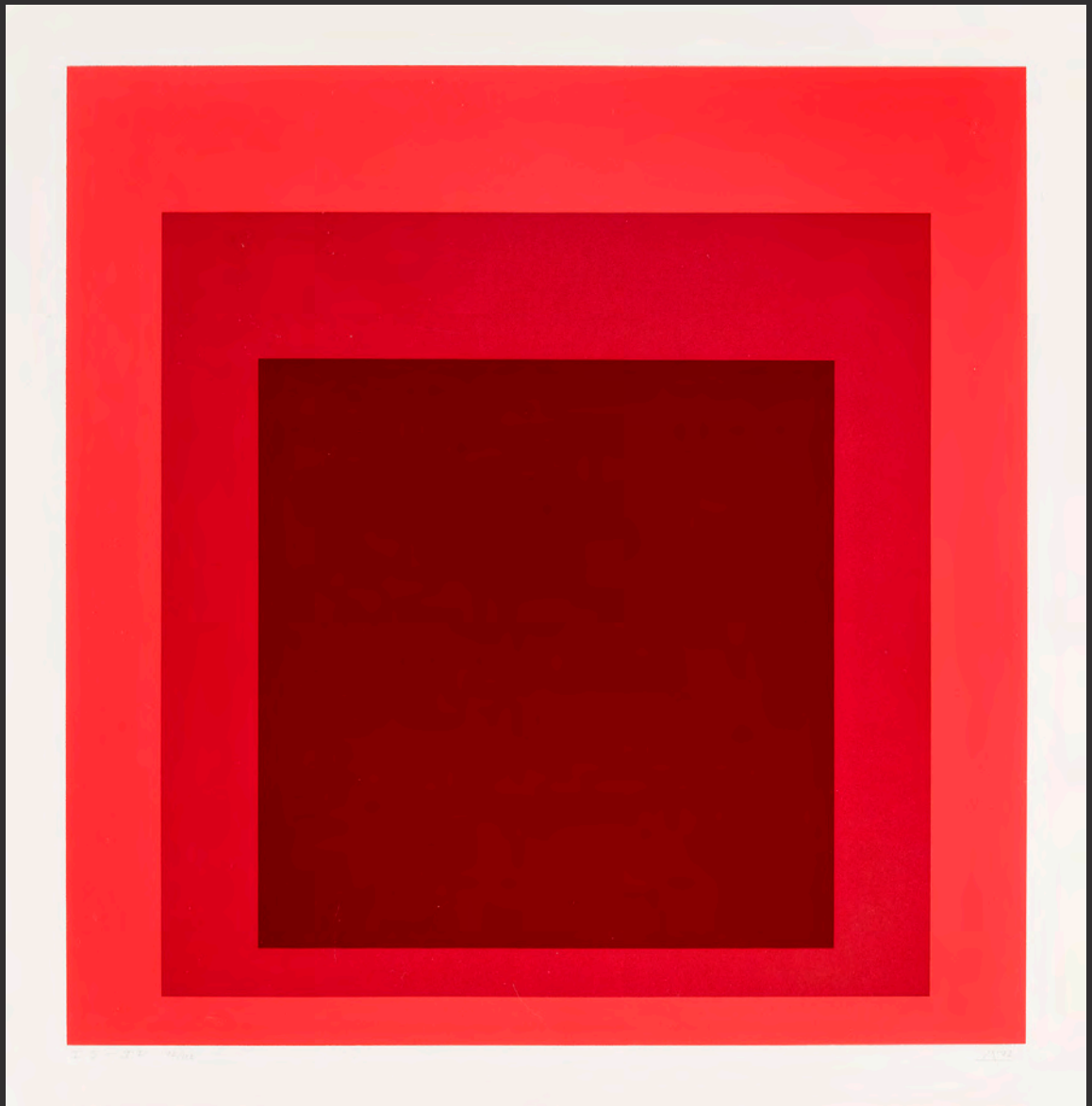
I-S JP, 1972

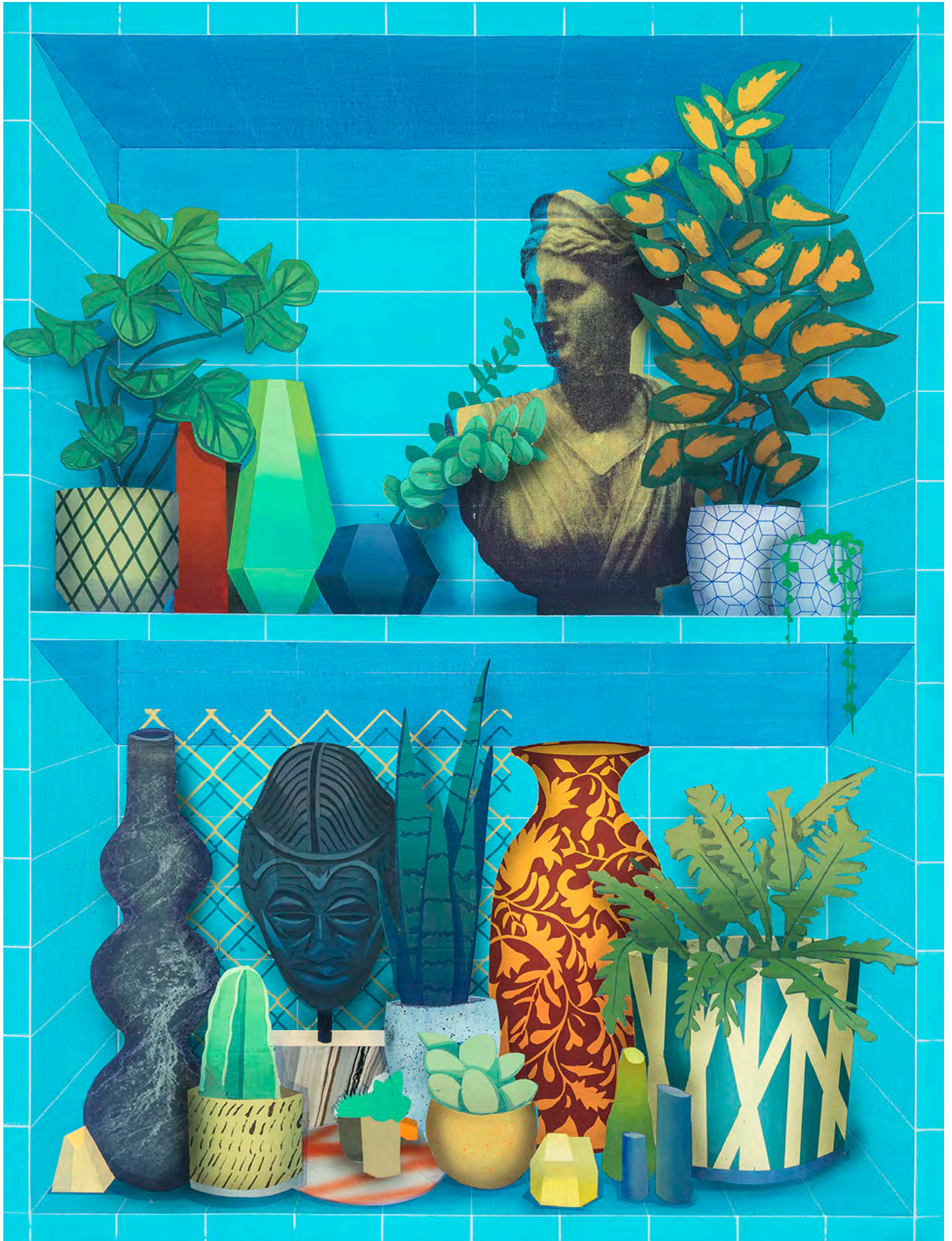
Color screenprint on German etching paper,
15 x 15 in. (image); 30 x 30 in. (sheet)

\$24,000

[INQUIRE](#)

[COMMENTARY](#)







HONORÉ SHARRER (1920–2009)
Bars and Eating Places Are Ideal Spots, 1947
Casein and ink on paper, 15 x 20 in.

\$30,000

[INQUIRE](#)

[COMMENTARY](#)

(previous page)

ROBERT MINERVINI (b. 1981)
In the Fold, 2018
Acrylic on canvas, 41 7/8 x 32 in.

\$7,000

[INQUIRE](#)

[ARTIST CV](#)

THOMAS BALL (1819–1911)

La Petite Pensée, 1871

Marble, 19 1/2 in. high x 13 1/4 in.
wide x 8 1/4 in. deep

\$40,000

[INQUIRE](#)

[COMMENTARY](#)





GEORGE WESLEY BELLOWS
(1882–1925)

The Tournament, 1920
Lithograph, 14 3/4 x 18 1/8 in.

\$22,000

[INQUIRE](#)

[COMMENTARY](#)

WILHELM HUNT DIEDERICH
(1884–1953)

Two Cowboys

Paper cutout on rice paper,
10 1/2 x 16 in.

\$14,000

[INQUIRE](#)

[COMMENTARY](#)



FRANK WALTER (1926–2009)

Mauve Sky Over Coast

Oil on paper (Polaroid film cartridge cover),
with metal cartridge, 3 7/8 x 3 1/4 in.

\$4,500

[INQUIRE](#)

[ARTIST CV](#)



JOHN RUTHERFORD BOYD (1884–1951)

Triple Paraboloidal Helix, 1940–45

Lucite on wood base with lightbulb, electrified,
19 1/2 in.

\$11,000

[INQUIRE](#)

[COMMENTARY](#)



COLIN BROWN (b. 1965)

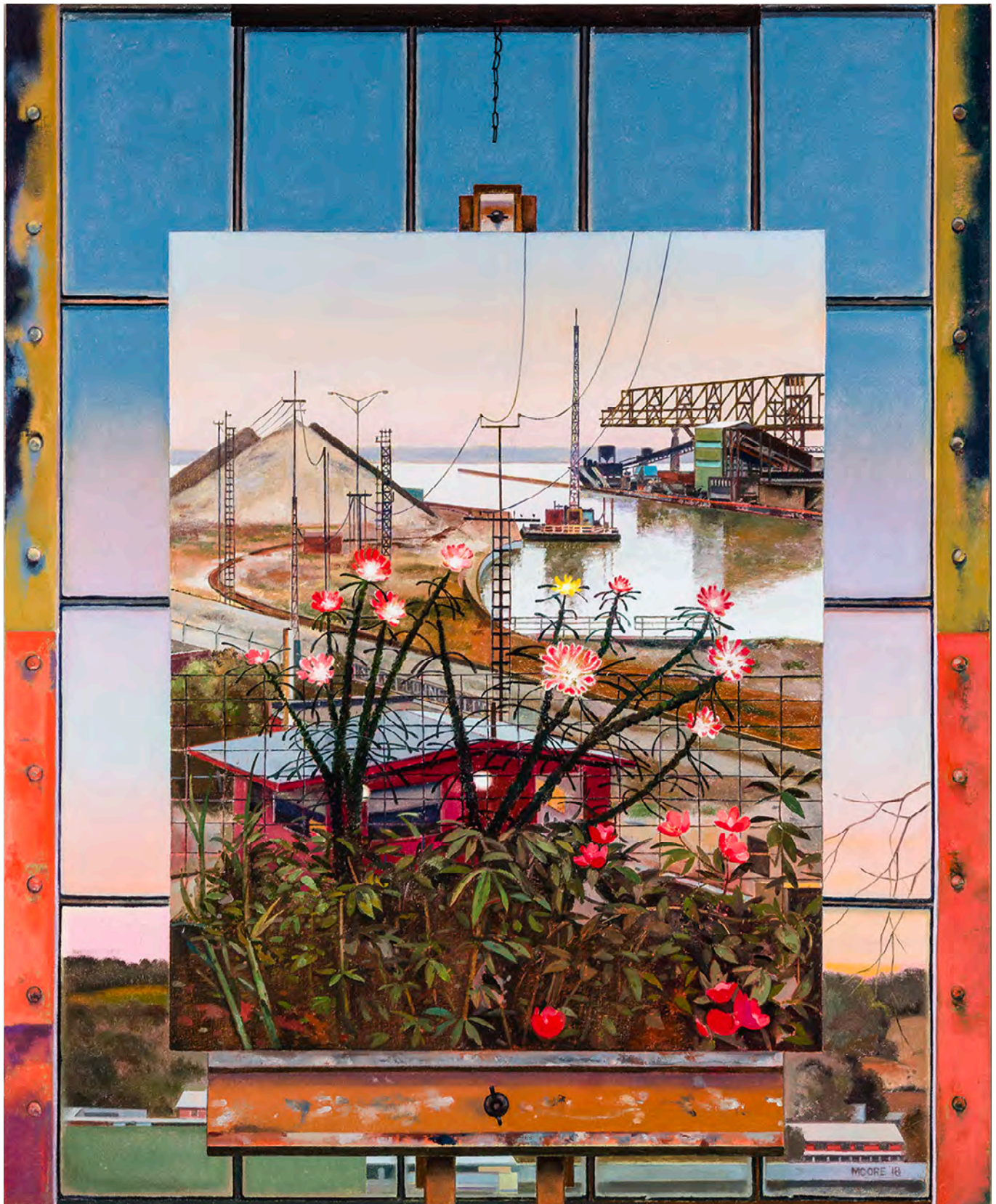
Chrysler Building, 2016

Carbonized nickel on board, 22 x 29 in.

\$35,000

[INQUIRE](#)

[ARTIST CV](#)



JOHN MOORE (b. 1941)
Double Dusk, 2018
Oil on canvas, 44 x 36 in.
\$40,000

[INQUIRE](#)

[ARTIST CV](#)



RANDALL EXON (b. 1956)
Evening, Glebe House, 2014
Monotype on Fabriano paper with gouache,
10 3/4 x 21 in.

\$7,500

[INQUIRE](#)

[ARTIST CV](#)



TUCKER FACTORIES, PHILADELPHIA
(active 1827–1838)

Large Pitcher in the “Grecian” Shape,
about 1827–38

Porcelain, painted-gilded, 9 3/4 in.

\$25,000

[INQUIRE](#)

[COMMENTARY](#)

COLIN HUNT (b. 1973)

Study for Untitled [The Cove] No. 3, 2019

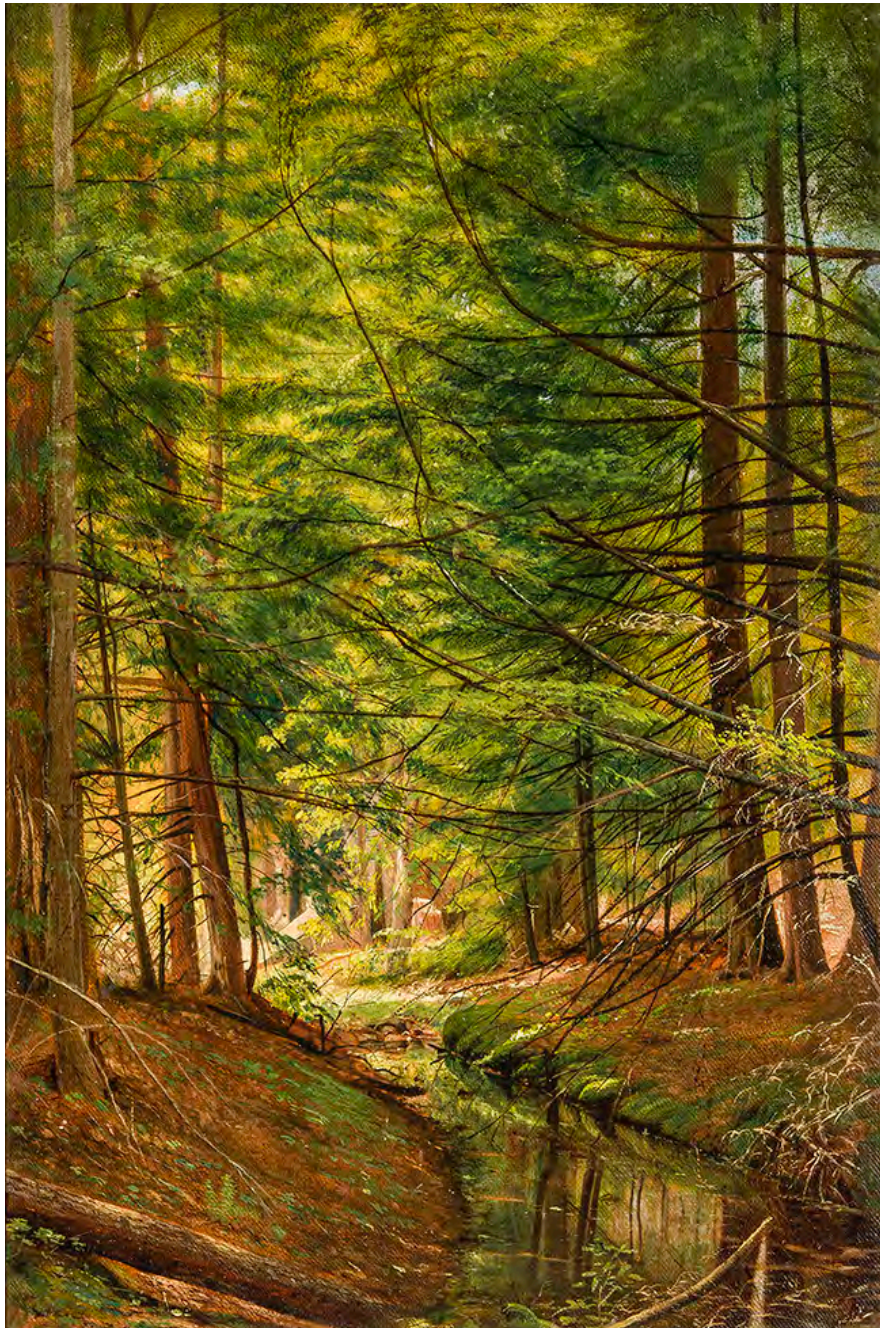
Watercolor on paper, 15 x 15 in.

\$4,000

[INQUIRE](#)

[ARTIST CV](#)





JERVIS McENTEE (1828–1891)

River in the Forest

Oil on canvas, 15 1/4 x 10 in.

\$25,000

[INQUIRE](#)

[COMMENTARY](#)



WINOLD REISS (1886–1953)

Untitled

Ink on paper, 14 7/8 x 19 7/8 in.

\$60,000

[INQUIRE](#)

[COMMENTARY](#)



DAVID LIGARE (b. 1945)
Still Life with Figs on Cloth, 2014
Oil on canvas, 9 3/4 x 13 3/4 in.
\$12,000

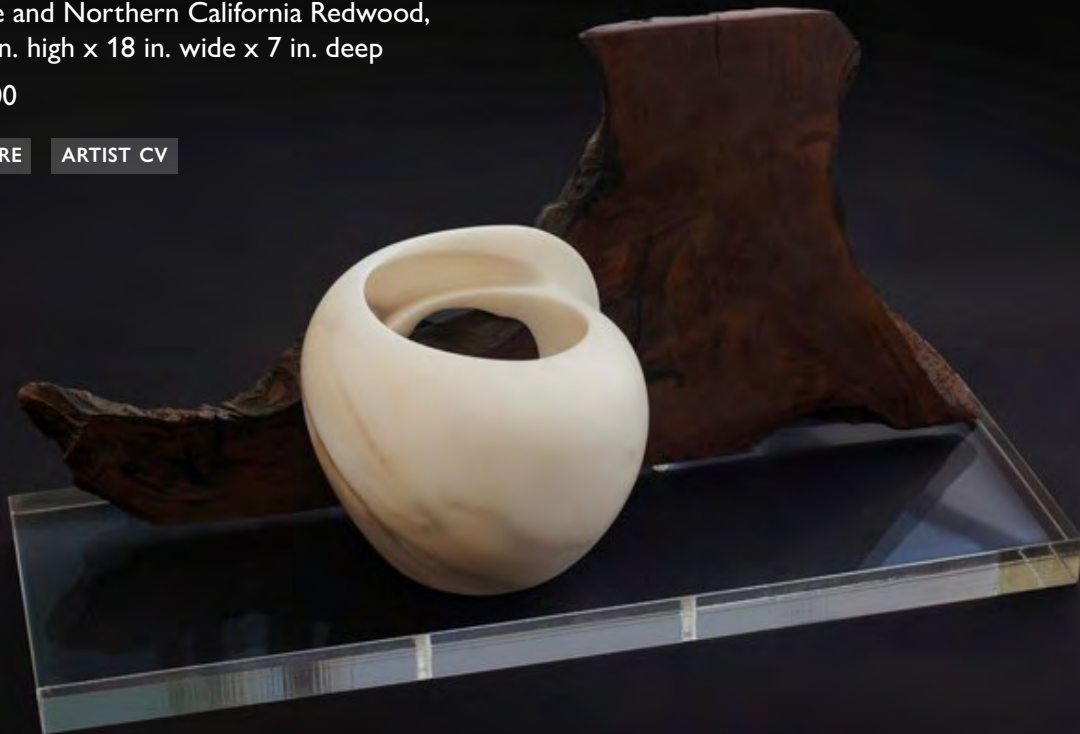
[INQUIRE](#)

[ARTIST CV](#)

ELIZABETH TURK (b.1961)
HOME. Model 2, 2017
Marble and Northern California Redwood,
9 1/2 in. high x 18 in. wide x 7 in. deep
\$12,000

[INQUIRE](#)

[ARTIST CV](#)





(previous page)

RUTH RAY (1919–1977)

The Portal, 1945

Oil on canvas, 17 1/8 x 14 1/8 in.

\$16,000

[INQUIRE](#)

[COMMENTARY](#)

BLANCHE LAZZELL (1878–1956)

Study No. 4 for "Painting XII", 1929

Gouache on paper, 8 7/8 x 8 in.

\$45,000

[INQUIRE](#)

[COMMENTARY](#)



Blanche Lazzell. 1929



THOMAS FRANSIOLI (1906–1997)

Still Life of Flowers, 1959

Oil on canvas, 24 x 28 in.

\$30,000

[INQUIRE](#)

[COMMENTARY](#)



ROBERT HENRI (1865–1929)

Windmill Near Edam, 1907

Oil on wood panel, 8 x 10 in.

\$22,000

[INQUIRE](#)

[COMMENTARY](#)



CHILDE HASSAM (1859–1935)

The Colonial Table, 1915

Etching, 6 7/8 x 9 7/8 in.

\$45,000

[INQUIRE](#)

[COMMENTARY](#)

(following page)

AUGUST FRANZEN (1863–1938)
Le marché aux fleurs de Notre Dame
Watercolor on paper, 30 1/4 x 23 1/4 in.
\$35,000

[INQUIRE](#)

LEVI WELLS PRENTICE (1851–1935)

Baskets of Currants, 1891
Oil on canvas, 16 x 12 in.

\$45,000

[INQUIRE](#)

[COMMENTARY](#)







(previous page)

JAMES APONOVICH (b. 1948)

Bell Jar, 2013

Oil on canvas, 20 x 16 in.

\$20,000

[INQUIRE](#)

[ARTIST CV](#)



STONE ROBERTS (b. 1951)

Dahlias and Hydrangeas in Porcelain

Terrine, 2019–20

Oil on panel, 12 x 12 in.

\$25,000

[INQUIRE](#)

[ARTIST CV](#)



ATTRIBUTED TO
BOSTON AND SANDWICH GLASS CO.

Pair Apple Green Tulip Vases,

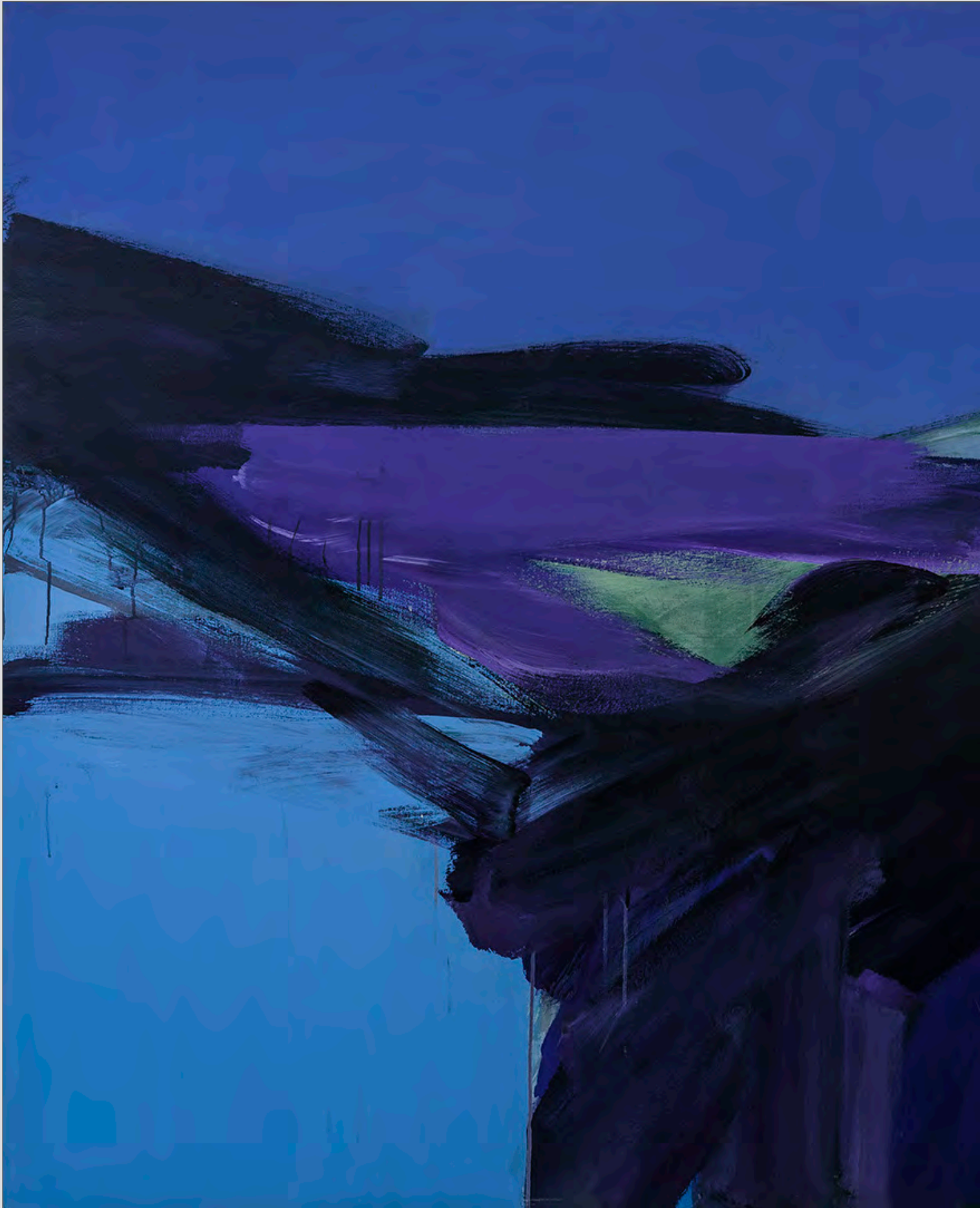
about 1840

Glass, pressed, 10 1/8 in. high

\$9,750

[INQUIRE](#)

[COMMENTARY](#)





RAY SPILLENGER (1924–2013)

Untitled (ZIG 4), about 1965

Oil on canvas, 65 x 90 in.

\$55,000

[INQUIRE](#)

[COMMENTARY](#)

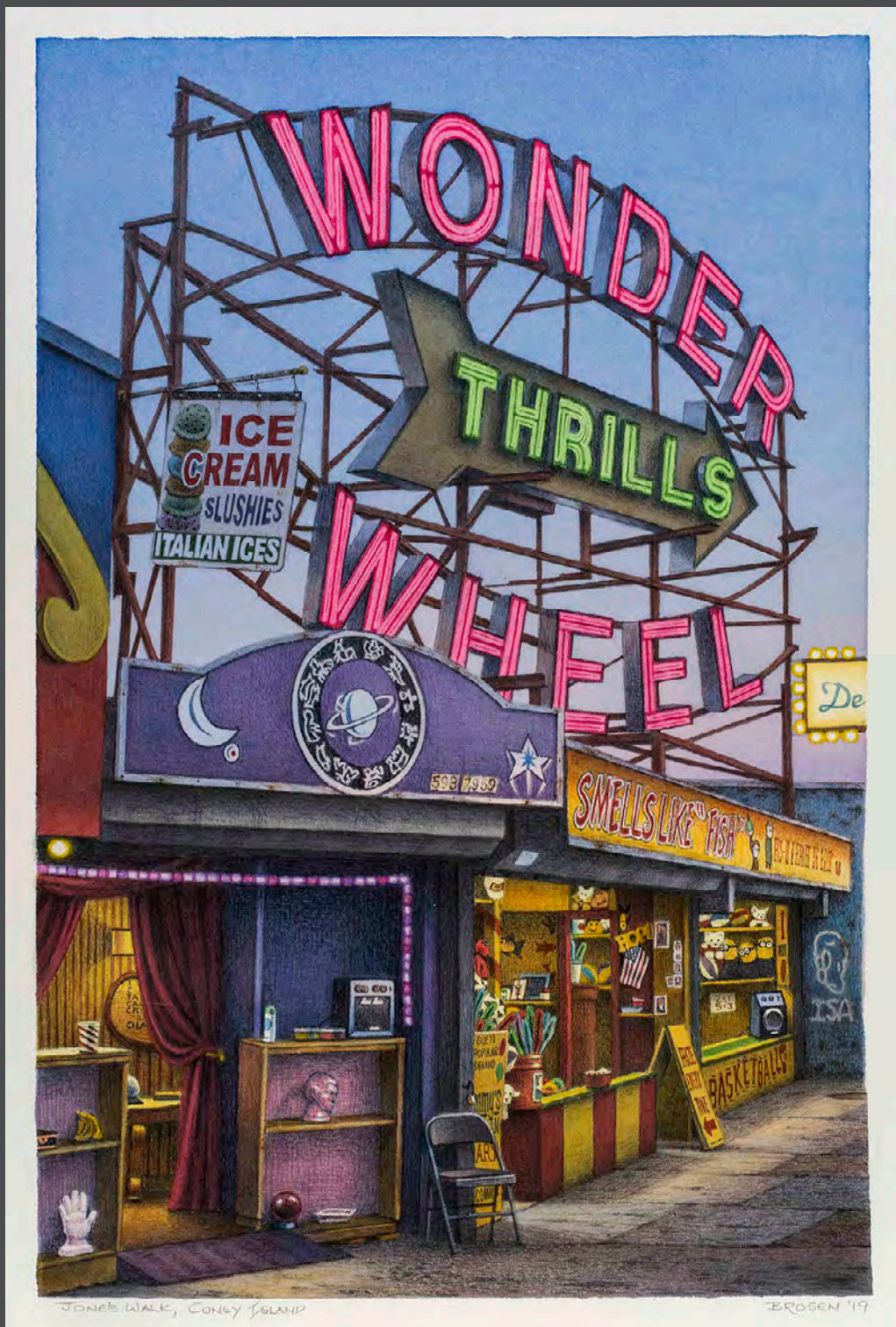
JOHN ATHERTON (1900–1952)
The Corn Belt [A Cover for "Holiday"
Magazine, August 1948], 1948
Gouache on paper, 18 x 14 in.

\$20,000

[INQUIRE](#)

[COMMENTARY](#)





JONES WALK, CONEY ISLAND

BROSEN '19

FREDERICK BROSEN (b. 1954)
Jones Walk, Coney Island, 2019
Watercolor over graphite on paper,
19 x 12 1/2 in.

\$20,000

[INQUIRE](#)

[ARTIST CV](#)


BOARD OF PATIENTS MUST BE PAID IN ADVANCE.—At its First Session After Receiving This Account, the County Court Shall Allow and Pay It.—See Section 4873, Chapter 72, R. S. 1899.

STATE HOSPITAL NO. 3. 2

NEVADA, MO. _____ 190_____

Address _____ } For _____

TO J. R. WALTON, TREASURER, DR



Balance Due us, \$ _____

In TESTIMONY WHEREOF, I hereunto set my hand and affix my official seal, this _____ day of _____ 190_____

Please Return This Statement When You Remit

Superintendent.

J. R. WALTON, Treasurer.

(recto)

JAMES EDWARD DEEDS JR. (1908–1987)
Car / "LADY. VANBURON"
Graphite and crayon on ledger paper,
9 1/4 x 8 3/8 in.

\$20,000

[INQUIRE](#)

[COMMENTARY](#)



(verso)



ENGLISH

Hurricane Lamp, about 1825

Gilt and patinated bronze, with blown
glass shade, frosted and painted

19 1/4 in. high

\$14,000

[INQUIRE](#)

[COMMENTARY](#)



BENJAMIN WEST (1738–1820)

A Mighty Angel Standeth Upon the Land and Upon the Sea, 1797

Oil on paper mounted on wood panel, 31 x 21 3/8 in.

\$65,000

[INQUIRE](#)

[COMMENTARY](#)



JOSHUA SHAW (1776–1861)

At the Spring, 1849

Oil on canvas, 10 1/2 x 14 in.

\$35,000

[INQUIRE](#)

[COMMENTARY](#)



ELIZABETH TURK (b. 1961)

The Air We Breathe, 2020

Getty fire ash and charcoal on paper, 24 x 18 in.

\$7,500

[INQUIRE](#)

[ARTIST CV](#)

ROBERT NATKIN (1930–2010)

Apollo #154, 1981

Acrylic on canvas, 36 x 40 in.

\$28,000

[INQUIRE](#)

[ARTIST CV](#)



LOUISA L. CHASE (1951–2016)

Untitled, 1989

Watercolor, ink, pencil, and
charcoal on paper,
19 3/4 x 23 1/2 in.

\$20,000

[INQUIRE](#)

[ARTIST CV](#)



MARÍA ELENA GONZÁLEZ (b. 1957)

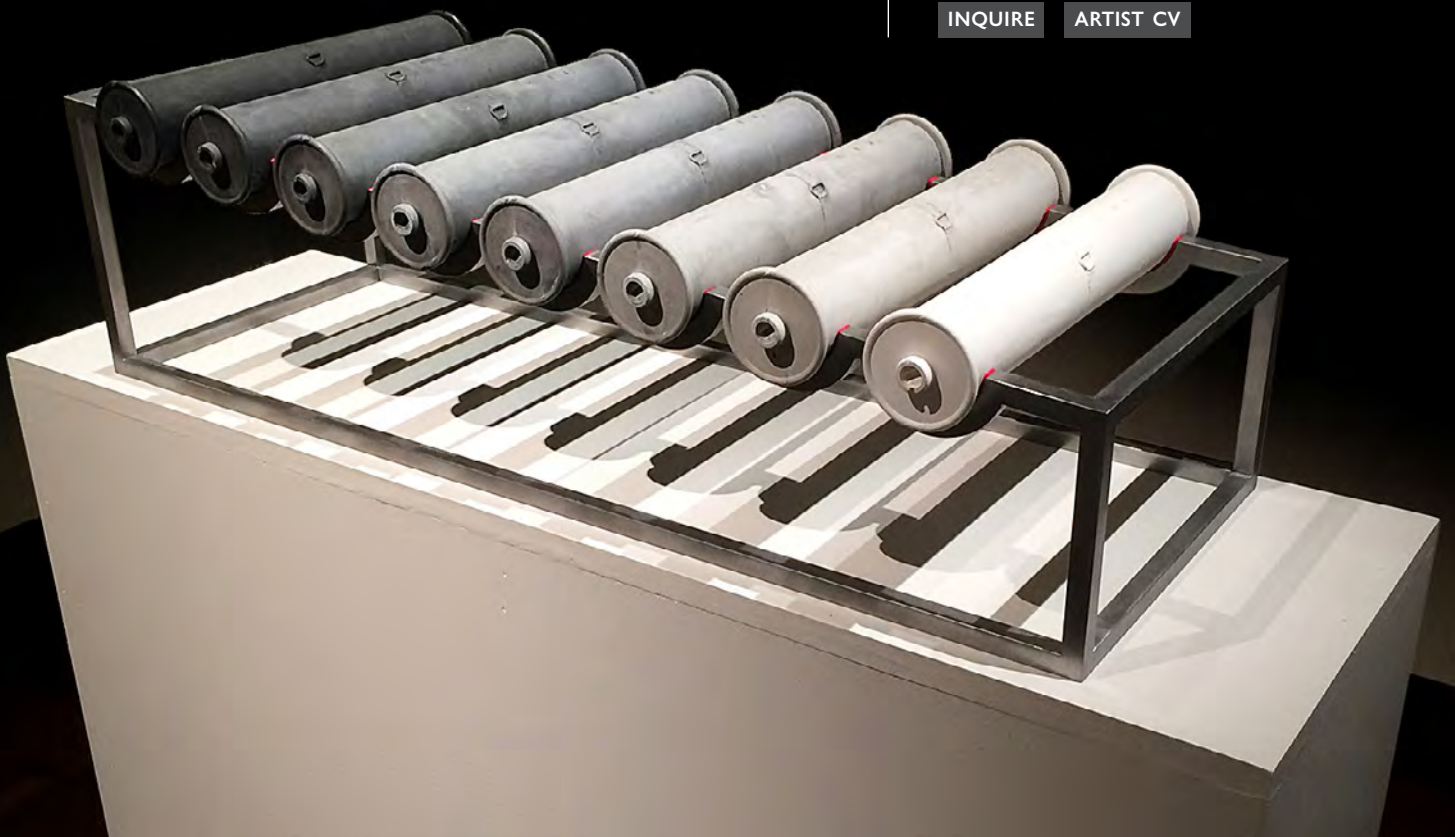
Chromatic Scale (Xylophone), 2016

Steel, rockite, hydrocal, and felt,
10 in. high x 25 in. wide x 11 in. deep

\$28,000

[INQUIRE](#)

[ARTIST CV](#)



ATTRIBUTED TO
THOMAS S. RENSHAW and JOHN BARNHART,
(active together, about 1814–15), Baltimore
Painted Chinese Red and Gilded "Fancy" Side Chair,
about 1815

Mahogany, painted and gilded, with caning,
32 1/2 in. high, 19 in. wide, 21 in. deep (overall)

\$32,500

[INQUIRE](#)

[COMMENTARY](#)



ANGELA FRALEIGH (b. 1976)

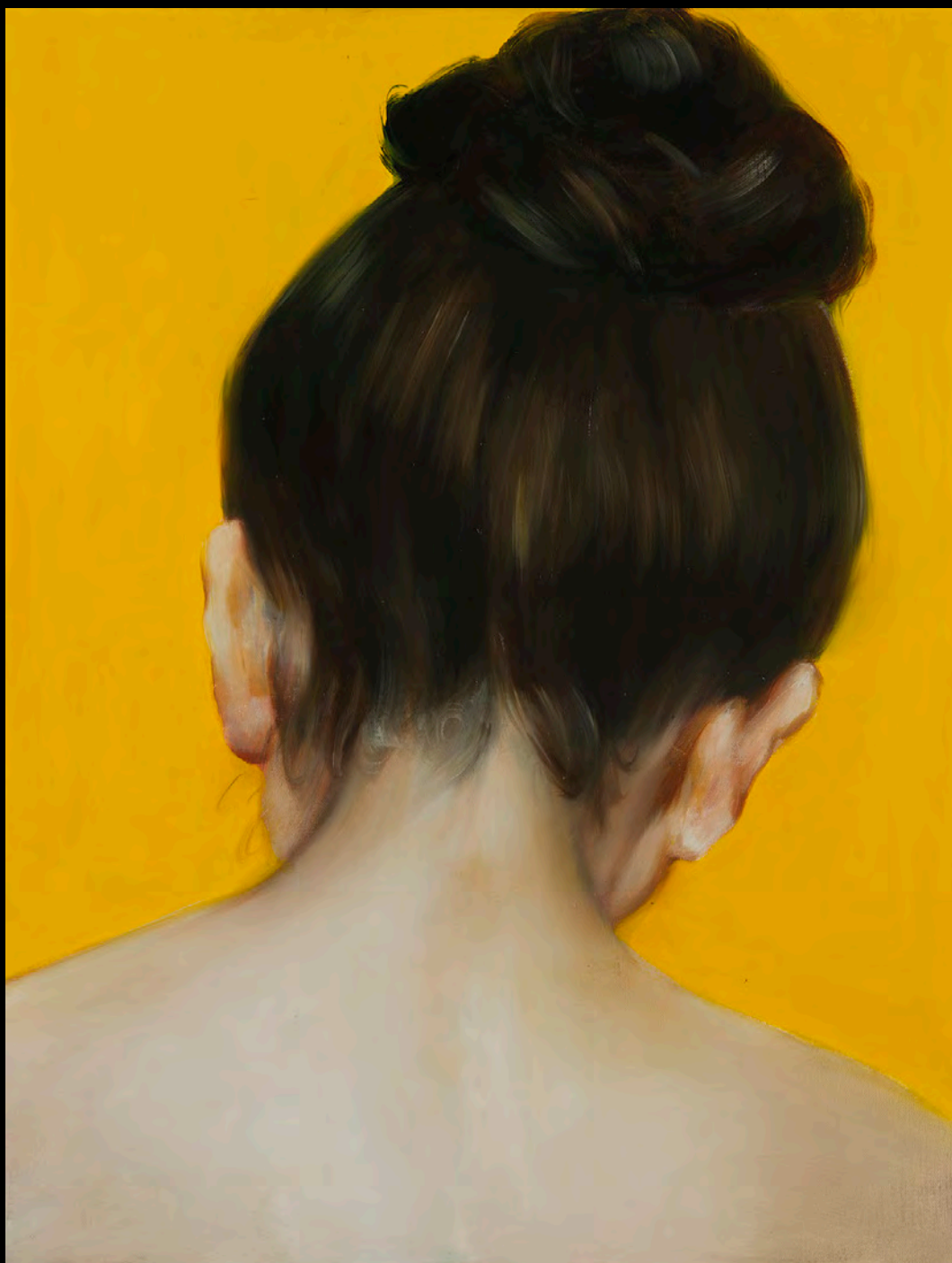
A late frost drifted back, 2015

Oil on linen, 24 x 18 in.

\$7,500

[INQUIRE](#)

[ARTIST CV](#)



RUTH LIGHT BRAUN (1906–2003)
Adolescence (Deborah), about 1928
Conté crayon on paper, 26 x 21 1/2 in.
\$20,000

[INQUIRE](#)

[COMMENTARY](#)



KURT SELIGMANN (1900–1962)
Carnival Dance
Ink on paper, 23 x 29 in.
\$22,000

[INQUIRE](#)



MARGUERITE ZORACH (1887–1968)

Study for a Fan, about 1912

Watercolor on paper, 8 1/2 x 17 in.

\$45,000

[INQUIRE](#)

[COMMENTARY](#)



DAVID LIGARE (b. 1945)
Still Life with White Roses in Pot, 2018
Oil on canvas, 12 x 16 in.

\$14,000

[INQUIRE](#)

[ARTIST CV](#)

ANDY MISTER (b. 1979)
Eden (for Mark Hollis), 2019
Carbon pencil, charcoal, and acrylic on
paper mounted on panel, 20 x 16 in.

\$3,600

[INQUIRE](#)

[ARTIST CV](#)



MARC TRUJILLO (b. 1966)
Meal #6, 2012
Oil on panel, 13 1/2 x 20 in.

\$6,000

[INQUIRE](#)

[ARTIST CV](#)



PHOTOGRAPHY

All photographs by Eric W. Baumgartner, except:

Works by James Edward Deeds, photographs by Harris Diamant

© 2020 Hirschl & Adler Galleries, Inc.



HIRSCHL & ADLER

The Fuller Building
41 East 57th Street
New York, NY 10022

212.535.8810

www.HirschlAndAdler.com

Gallery@HirschlAndAdler.com