



HIRSCHL & ADLER GALLERIES



May 12–16, 2023

[APG 20054D](#)

COLIN CAMPBELL COOPER (1856–1937)

Waldorf-Astoria, about 1908

Oil on board, 14 x 10 3/4 in.

Signed (at lower right): Colin Campbell Cooper



[APG 21095D.003](#)

MANIERRE DAWSON (1887–1969)

Untitled (Pictogram II), about 1914

Oil on canvas, 18 x 24 in.



[APG 21094D.016](#)

WILHELM HUNT DIEDERICH (1884–1953)

Stag with Five Hounds

Paper cutout on thin rice paper, 10 x 15 1/4 in. (sight)

Signed (on black border surround): Hunt Diederich



[APG 21094D.019](#)

WILHELM HUNT DIEDERICH (1884–1953)

Diana with Hound

Paper cutout on rice paper, 9 1/2 x 12 in. (sight);

11 1/2 x 15 in. (sheet)

Signed (in pencil, at lower right): Hunt Diederich



[APG 21094D.034](#)

WILHELM HUNT DIEDERICH (1884–1953)

Greyhounds Playing

Paper cutout, 6 x 11 in. (sight); 7 1/2 x 12 in. (sheet)



[APG 21262D](#)

THOMAS FRANSIOLI (1906–1997)

View of Seattle, 1950

Oil on canvas, 21 x 27 in.

Signed and dated (at lower right): TOM FRANSIOLI 1950



[APG 21285D](#)

CHILDE HASSAM (1859–1935)

Portrait of Nan Wood Honeyman, 1904

Oil on canvas, 30 x 25 in.

Signed and dated (in upper left): Childe Hassam 1904



[APG 21289D](#)

CHILDE HASSAM (1859–1935)

Spanish Ledges, 1912

Oil on canvas, 22 x 24 in.

Signed and dated (at lower left): Childe Hassam / 1912



[APG 21267D.001](#)

CHILDE HASSAM (1859–1935)

Isles of Shoals, 1890

Watercolor on paper, 13 3/4 x 19 3/4 in. (sight size)

Signed, dated, and inscribed (at lower right): Childe Hassam;

(within square drawn box, at lower right): Isles / of / Shoals /

1890



[APG 21244D](#)

JOSHUA JOHNSON (about 1763–1830)

Portrait of a Gentleman, about 1805

Oil on canvas, 32 1/4 x 28 in.



[APG 8981](#)

JOHN KOCH (1909–1978)

The Concert, 1954

Oil on canvas, 25 x 30 in.

Signed (at lower right): Koch



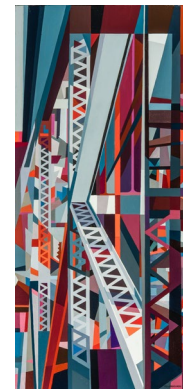
[APG 21291D.002](#)

EDMUND D. LEWANDOWSKI (1914–1998)

Steel and Gray, 1956

Oil on Masonite, 48 x 18 in.

Signed and dated (at lower right): E.D. LEWANDOWSKI 1956



[APG 21257D](#)

GEORGE LOVETT KINGSLAND MORRIS (1905–1975)

Roulade, 1934

Oil on canvas, 25 7/8 x 44 3/4 in.

Signed, dated, and inscribed (at lower left): 1934;

(at lower right): Morris; (on the back): George L K Morris /

Roulade 1934



[APG 21193D](#)

JANE PETERSON (American, 1876–1965)

The Beach, Gloucester, about 1915

Gouache on paper, 18 x 24 in.

Signed (at lower right): JANE PETERSON



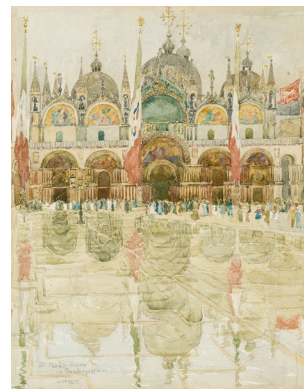
[APG 21217D.002](#)

JANE PETERSON (1876–1965)
Village Gossips, Brittany, about 1908–10
Watercolor and gouache on paper, 18 x 24 in.
Inscribed (on the back): Village Gossips



[APG 21290D](#)

MAURICE BRAZIL PRENDERGAST (1859–1924)
St. Mark's, Venice, 1898
Watercolor on paper, 14 7/8 x 11 3/4 in.
Signed, dated, and inscribed (at lower left):
St. Mark's Venice / ••Prendergast•• / ••1898••



[APG 21291D.001](#)

SIEGFRIED REINHARDT (American, 1925–1984)
Allegory, 1948–49
Oil on Masonite, 32 x 47 in.
Signed and dated (at lower left): S. Reinhardt–48–49



[APG 20068D](#)

PAUL SAMPLE (1896–1974)
Church in Evansville (Schoolhouse), 1934
Oil on canvas, 24 x 28 in.
Signed and inscribed (at lower center): Paul Sample;
(in pencil, on the stretcher): Schoolhouse / Paul Sample



[M 10413D.001](#)

HONORÉ DESMOND SHARRER (1920–2009)

Dog, 1984

Oil on canvas, 40 x 40 in.

Signed (at lower right): Sharrer



[M 10413D.002](#)

HONORÉ DESMOND SHARRER (1920–2009)

Poker, 1987

Oil on canvas, 22 x 19 in.



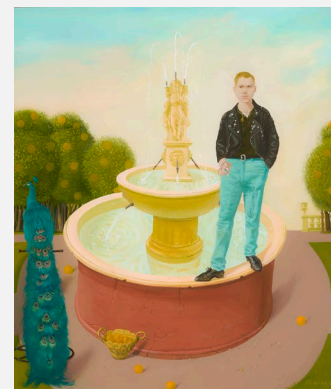
[M 10294D.016](#)

HONORÉ DESMOND SHARRER (1920–2009)

Young Man Standing on the Fountain, 1988

Oil on canvas, 20 x 17 in.

Signed (at lower right): Sharrer



[APG 21286D](#)

JOSEPH STELLA (1877–1946)

Prickly Pears and Pomegranates, about 1929

Watercolor and gouache on paper, 13 1/4 x 19 1/2 in.

Signed (at lower right): Joseph Stella



