

An abstract painting featuring a rich palette of warm colors, including deep reds, oranges, yellows, and pinks. The texture is highly visible, with thick brushstrokes and areas of impasto. There are dark, swirling shapes that suggest floral or organic forms, possibly representing leaves or petals. The overall composition is dense and layered, with a sense of movement and depth.

Hirschl & Adler at
Art Basel Miami Beach 2025
Booth H3



ELIZABETH CATLETT

1915–2012



Elizabeth Catlett
Torso, about 1988
Bronze, on white marble pedestal, 13 1/4 x 6 1/2 x 4 in.
\$85,000

An abstract painting featuring a textured surface with various colors including green, yellow, red, and blue. The composition is layered and expressive, with visible brushstrokes and a sense of depth. The text is overlaid on the right side of the painting.

JANE FREILICHER

1924–2014



Jane Freilicher
Hill and Sky, 1963
Oil on canvas, 25 x 30 in.
\$75,000

LONNIE HOLLEY

b. 1950



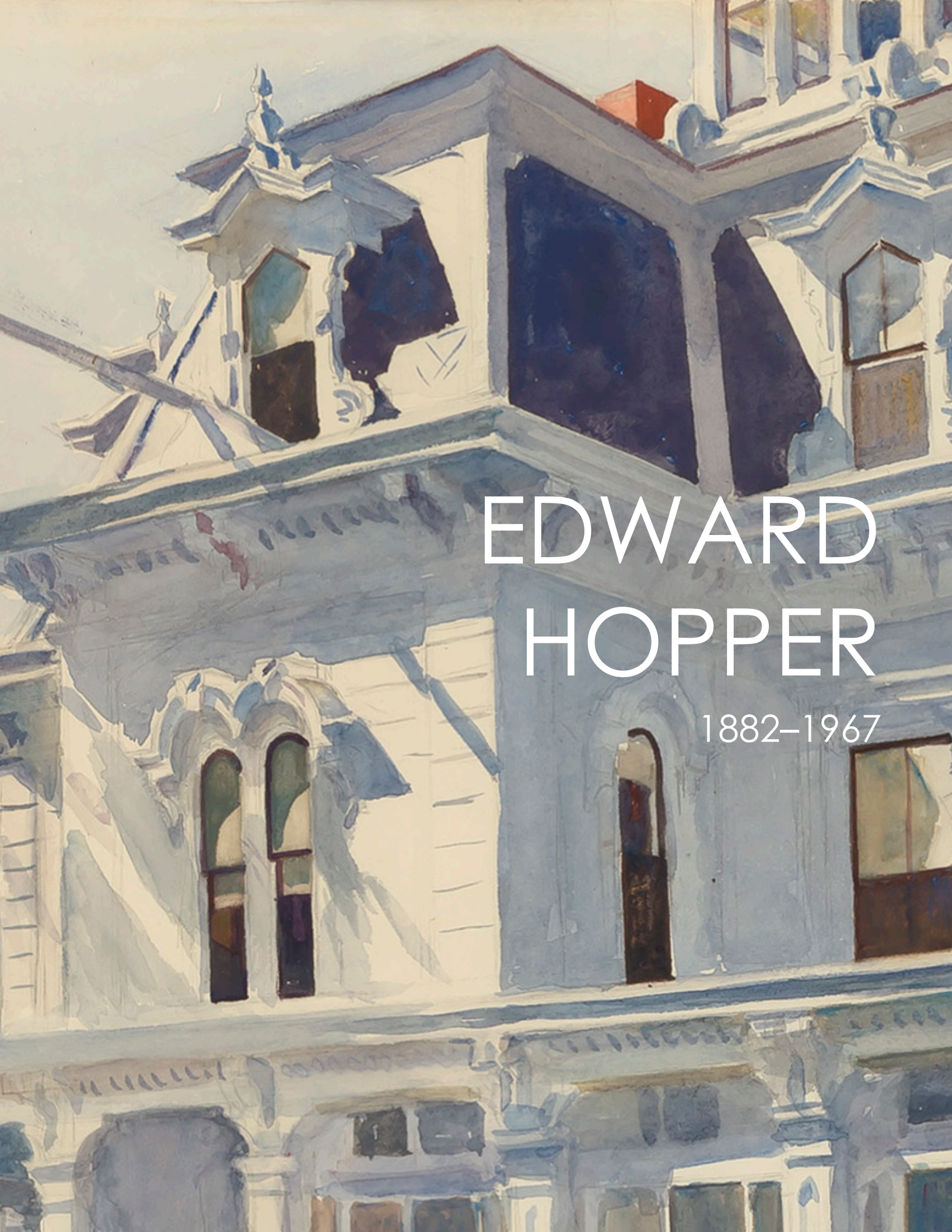


Lonnie Holley

Untitled (Horn & Wine Bottle), Floor Piece, about 2002–03

Mixed media assemblage, 49 1/2 x 38 1/2 x 14 1/4 in.

\$75,000



EDWARD HOPPER

1882–1967



Edward Hopper
Talbot's House, 1926
Watercolor on paper, 13 7/8 x 20 in.
Price on request

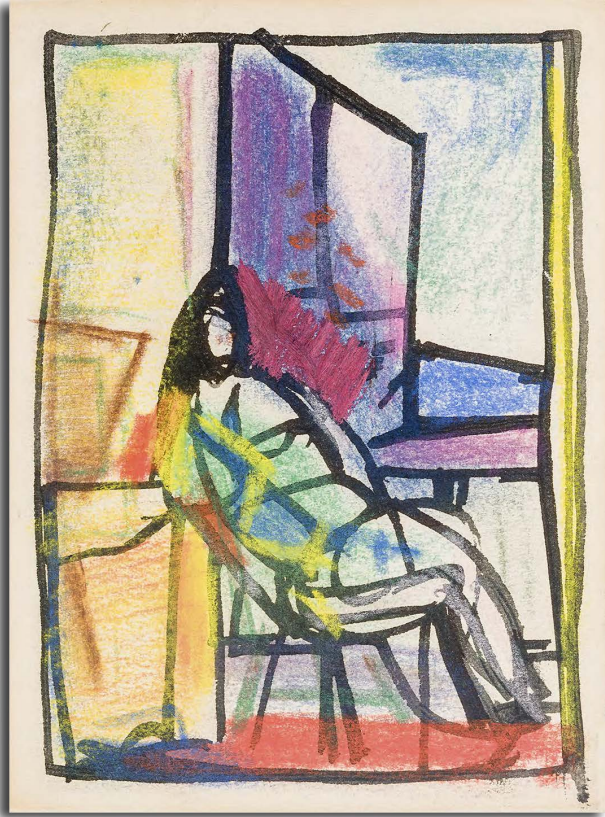


FRANZ KLINE

1910–1962



Franz Kline
Chatham Square, 1948
Oil on canvas, 41 x 30 in.
Sold



Franz Kline
Seated Woman (Elizabeth), 1948
 Ink and pastel on paper,
 6 3/16 x 4 7/8 in.
 \$20,000



Franz Kline
Studio Interior, 1946
 Oil on canvas,
 17 1/2 x 14 1/2 in.
 Sold

An abstract expressionist painting by Elaine de Kooning. The composition is dominated by bold, dark, expressive brushstrokes in black and dark brown, which appear to form a central, somewhat indistinct figure or shape. This central form is surrounded by a vibrant, layered background of warm colors, including shades of red, orange, yellow, and pink. There are also cooler tones of blue and white interspersed within the warmer areas. The overall texture is very rough and painterly, with visible brushwork and a sense of dynamic movement. The lighting is uneven, with brighter areas in the upper right and darker, more shadowed areas in the lower left and center.

ELAINE DE KOONING

1920–1989



Elaine de Kooning

Cave #27, 1984

Acrylic on paper mounted to linen, 56 x 72 in.

\$350,000

An abstract painting by John Marin, featuring a vibrant, textured composition of swirling colors. The palette is dominated by various shades of green, from deep forest greens to bright, almost turquoise blues. These are interspersed with white, cream, and dark, charcoal-like tones. The brushwork is visible and expressive, with thick, impasto strokes that create a sense of movement and depth. The overall effect is one of dynamic energy and organic form, characteristic of the Die Brücke movement.

JOHN MARIN

1870–1953



John Marin
Cape Split, 1940
Oil on canvas, 22 x 28 in.
Price on request

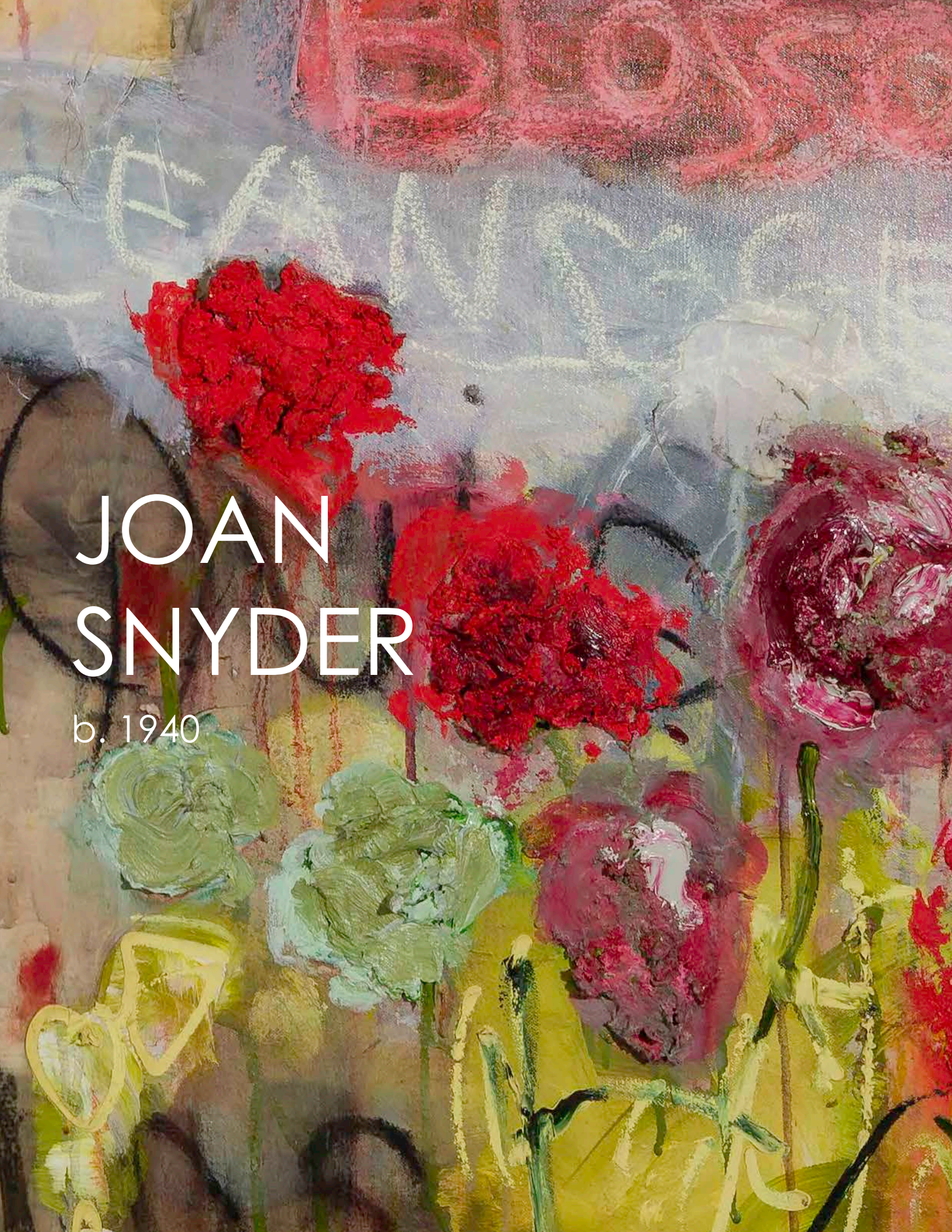
An abstract painting by Jules Olitski, featuring a complex, layered composition of colors. The palette includes deep blues, vibrant oranges, earthy greens, and bright yellows, all blended and streaked together in a dynamic, non-representational manner. The texture appears thick and expressive, with visible brushstrokes and areas of color saturation. The overall effect is one of intense energy and visual complexity.

JULES OLITSKI

1923–2007



Jules Olitski
Mystic Passage, 2000
Acrylic on canvas, 19 1/2 x 21 3/4 in.
\$35,000



JOAN SNYDER

b. 1940



Joan Snyder
...And Acquainted with Grief [diptych], 1997
Oil and mixed media on canvas, 48 x 108 in.
\$450,000

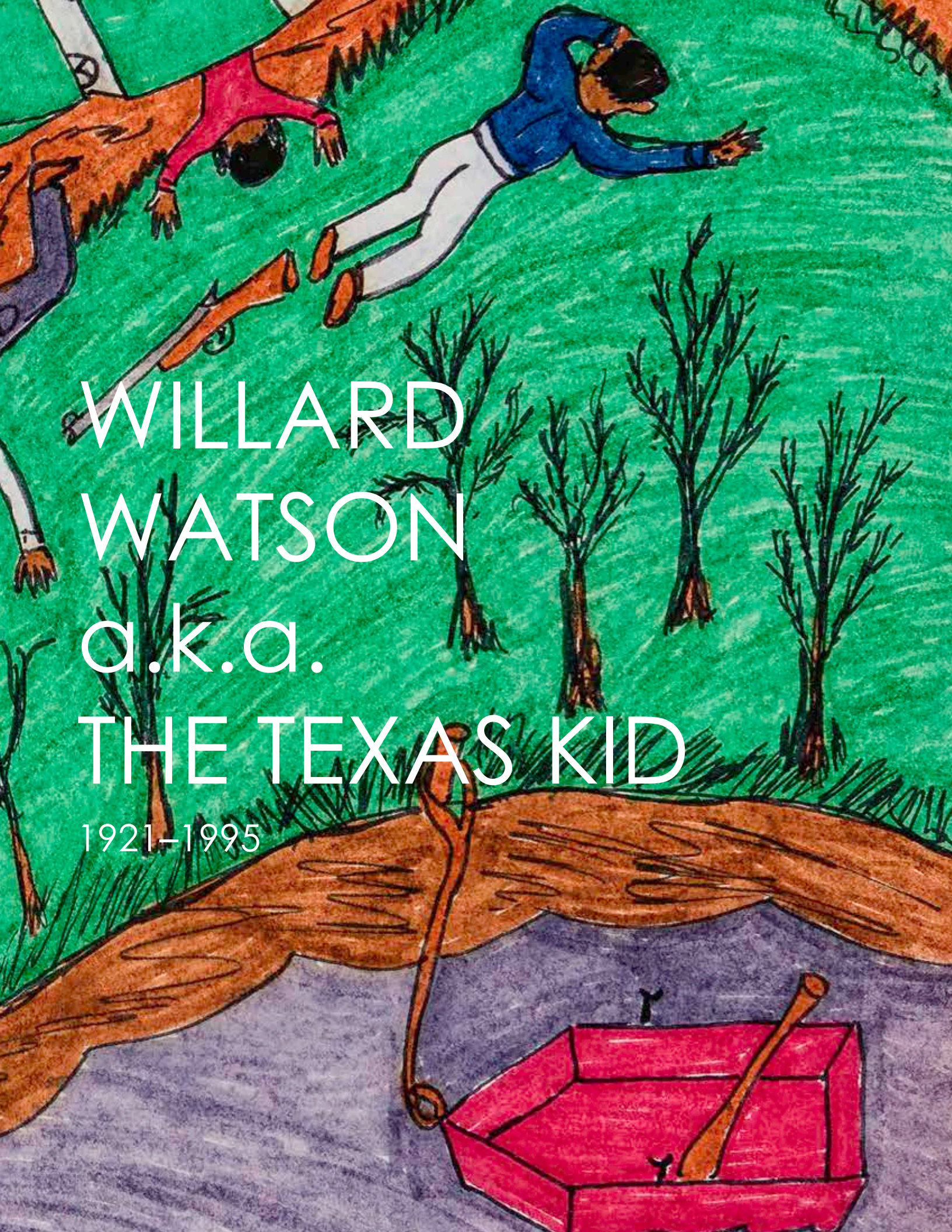


NILES SPENCER

1893–1952



Niles Spencer
In Fairmont, 1951
Oil on canvas, 65 1/2 x 41 1/2 in.
\$550,000



WILLARD
WATSON
a.k.a.
THE TEXAS KID

1921–1995



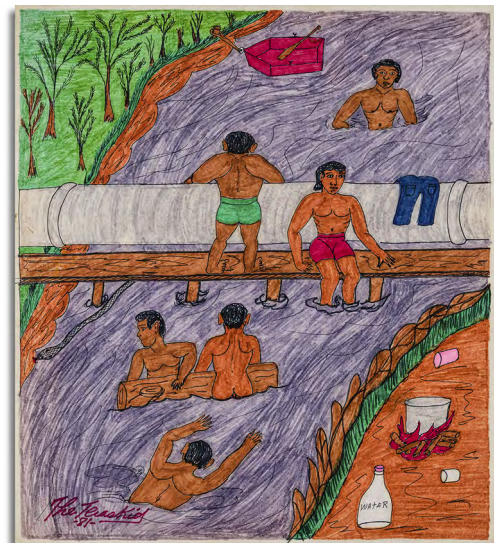
Willard Watson, a.k.a. The Texas Kid
Untitled (The Wreck), 1980
from **The Story of My Life (Life Cycle Series of 29 Works)**
Colored marker and pencil on 100% rag board, 13 1/4 x 15 in.
\$145,000 for the series

Willard Watson, a.k.a. The Texas Kid
from ***The Story of My Life (Life Cycle Series of 29 Works)***



**Family Leaving Shreveport
Coming to Texas, 1981**

Colored marker and pencil on paper,
13 1/4 x 17 in.



Swimming at the Pipe, 1981

Colored marker and pencil on
100% rag board, 15 x 13 1/4 in.




Police Shot at Me by Mistake, 1981

Colored marker and pencil on
100% rag board, 13 1/4 x 15 in.



**The White Man Who Helped us Get
Off the Plantation, 1981**

Colored marker and pencil on
100% rag board, 13 1/4 x 15 in.

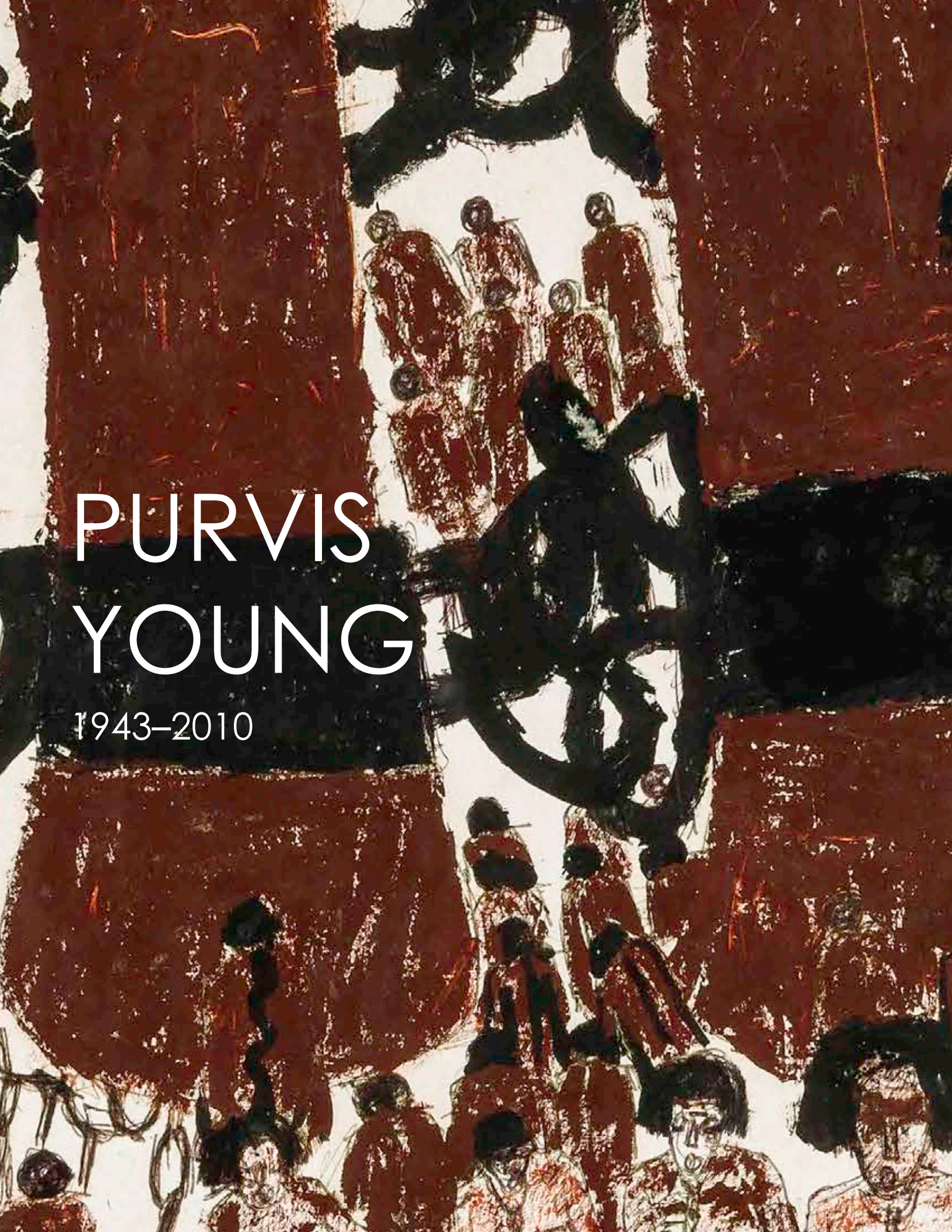
The background is a watercolor painting. On the left, a white, textured surface, possibly a wall or a large piece of paper, is visible. To its right, a dark, rocky shoreline or cliff face is depicted with various shades of brown, black, and grey. A small, white, triangular structure, possibly a lighthouse or a small building, is perched on the edge of the white surface. The water or sky area is rendered with soft, blended colors of blue, green, and white, suggesting a misty or overcast day. The overall style is soft and painterly.

ANDREW WYETH

1917-2009



Andrew Wyeth
Channel Bell, 1979
Watercolor on paper, 29 x 21 in.
\$450,000



PURVIS YOUNG

1943–2010



Purvis Young
Shackles, early 1970s
Paint on window shade with paper and fabric, 17 x 23 1/2 in.
\$30,000

CORNELIA FOSS

b. 1931





Cornelia Foss
Ocean Beach, 2014 Oil
on canvas, 52 x 52 in.
Sold



ANGELA FRALEIGH

b. 1976



Angela Fraleigh

In the Hopeful Haunting: A Spell for Seeing in the Dark, 2025

Oil, moonwater, and obsidian on Dibond panel, 60 x 48 in.

\$26,000



MARIA
ELENA
GONZALEZ

b. 1957



María Elena González

Double Black, 2025

Resin, Aqua-Resin, wood, black stain, lacquer, wax, epoxy,

9 1/2 x 15 3/4 x 8 3/4 in.

\$12,000



JULIE HEFFERNAN

b. 1956



Julie Heffernan
There is a World Elsewhere, 2025
Oil on canvas, 68 x 56 in.
\$60,000



COLIN HUNT

b. 1973



Colin Hunt
Untitled (Last Light), 2025
Egg tempera on panel, 48 x 36 in.
\$34,000



TULA TELFAR

b. 1961



Tula Telfair
Fluid Desire, 2025
Oil on canvas, 72 x 68 in.
\$40,000



ELIZABETH TURK

b. 1961



Elizabeth Turk
Gould's Emerald, 2020
Anodized aluminum (black), 79 x 16 x 16 in.
\$70,000